



Homer Electric  
Association, Inc.



# STRONGER

# Together



**Brad Janorschke**  
HEA General Manager

[www.kpstrongertogether.com](http://www.kpstrongertogether.com)

# POWERING THE PENINSULA TOGETHER

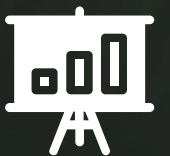
This partnership is a strategic opportunity to:



Craft the way to a resilient, energy secure future with the right partner



Connect the right people and the right communities



Create economic growth and highly skilled employees



Stabilize rates, maintain reliable power & jointly expand resources



# LET'S HAVE A CONVERSATION ABOUT THE FUTURE OF OUR SHARED UTILITY



Homer Electric Association, Inc.

## BENEFITS TO SEWARD

- Rates
- Reliability
- Resources



## BENEFITS TO HEA

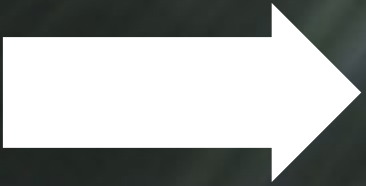
- Increased Load & Efficiency
- Economic Growth & Local Jobs
- Energy Stability Created by Local Choices

**GROWING STRONGER TOGETHER**

**DECISIONS FOR THE KENAI SHOULD BE MADE BY THE KENAI**

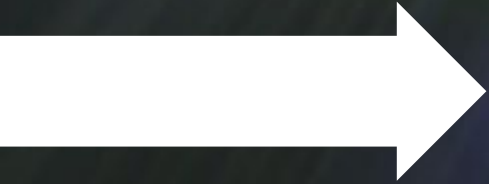


# STRONGER BY THE NUMBERS



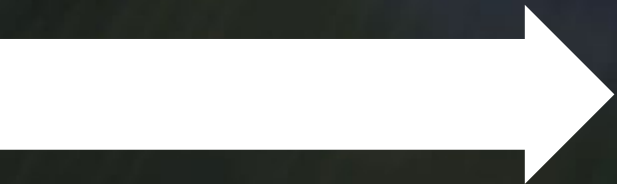
**35,865** meters

Residential, small and large general service and industrial customers



**2,499** miles

2,499 total miles of energized lines



**139** employees

Full-time employees dedicated to delivering safe and reliable electricity



**60** MW average load





BUSINESS DRIVEN. PEOPLE FOCUSED.



Practical solutions. Exceptional results.

# STRONGER WITH OUR RESOURCES

## GENERATION ASSETS



Nikiski Combined Cycle Plant  
80.0 MW



Battery Energy Storage System (BESS)  
46.5 MW



Bradley Lake Hydroelectric Plant  
14.0 MW



Soldotna Combustion Turbine Plant  
48.0 MW



Seldovia Gerry Willard Generation Plant  
2.2 MW



Bernice Lake Combustion Turbine Plant  
76.0 MW

## PROPOSED RESOURCE DIVERSIFICATION



KPB Landfill Gas to Energy Project  
1.6 MW



Grant Lake Hydroelectric Project  
5.0 MW



Solar  
23.3 MW



Wind



Geothermal



# STRONGER IN COLLABORATIVE SPIRIT

## SPECIALIZED STAFF AND DEPARTMENTS

- Cybersecurity and Advanced Information Technology
- Dedicated Safety Program
- Facilities, Warehousing and Procurement
- Substation Design, Maintenance, and Operations
- Fleet Management
- Regulatory Affairs
- Engineering
- Generation and Fuels
- Billing, Accounting, and Financing
- Public Relations and Legislative
- Dedicated Member Relations



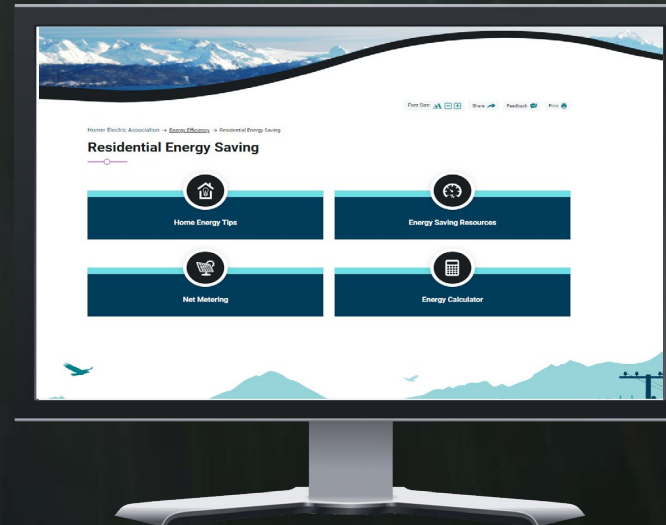
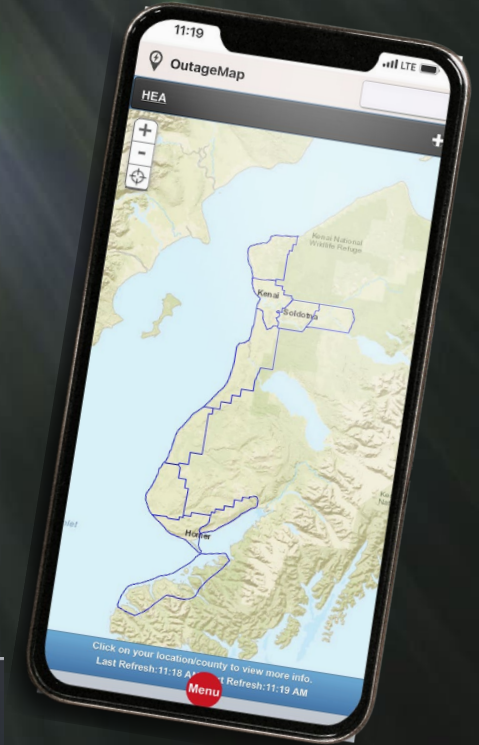
## ADDITIONAL BENEFITS

- Competitive payroll programs
- Outstanding benefits for all employees
- Employee engagement programs
- “Open Door” communications with leadership
- Continued education opportunities
- Family-first vision in workforce
- Commitment to our communities
- Youth programs and learning opportunities



# STRONGER WITH INNOVATIVE TECHNOLOGY

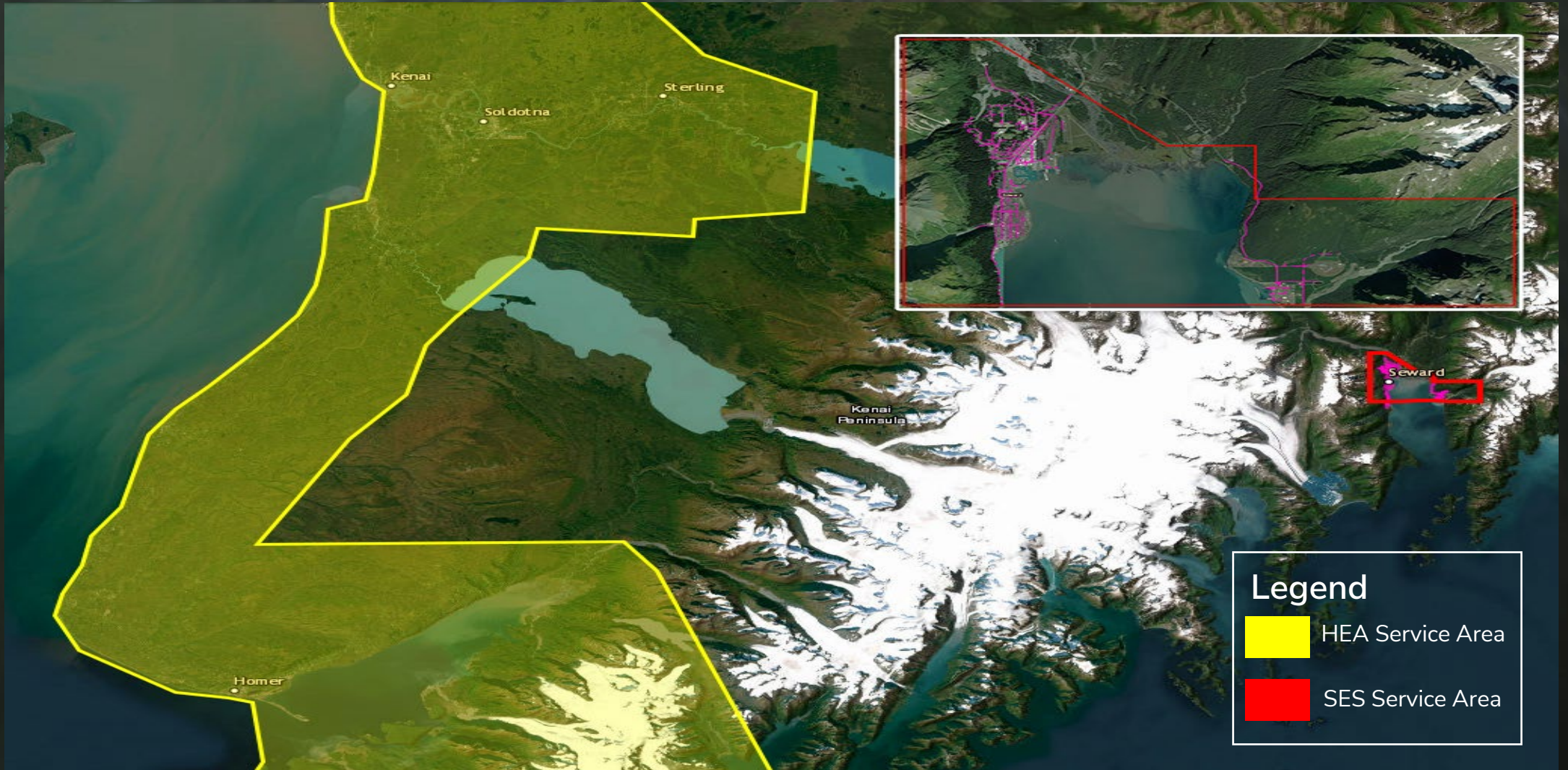
- Real-time Outage Map
- Outage Text Notification
- Energy Calculator
- Line of Credit Program
- Budget Billing Program
- Electronic Billing
- Mobile App
- Meters
- Heat Pump Rebate
- Net Metering Program







# STRONGER WITH OUR COMBINED SERVICE AREAS





# Vote Yes – to a Stronger Together Energy Future



**MARCH 31**

Voter Registration Cut-Off  
In Person @ City Clerk's Office



**APRIL 2**

Online Voter Registration Cut-Off



**APRIL 17**

Absentee Voting Opens



**MAY 2**

Special Election on Sale of  
Electric Utility 7AM – 8PM



**MAY 8**

City Council Meeting Election  
Results Certified



**YOUR VOTE  
COUNTS!**

Let's get to 60%